

# Turning Pointe 2021-2022 Tuition & Fees

Checks are made payable to Turning Pointe Centre for the Arts or (TPCA) A \$35.00 check fee will be charge for all returned checks.

Tuition is due ON THE LAST DAY OF EACH MONTH to process payment by the 1<sup>st</sup> of each month (\$25.00) late fee will be added to account after 5<sup>th</sup> of the month.

## Fees Due at registration

\* Tuition (½ month for August plus all fees) \* September - June 10 months of full tuition. \*

**Registration \$35 / Recital Fee \$35 / MT & Worship Fee \$35 / Karate Fee \$35**  
**Per Class Costume Dep. \$55 (due at registration) ~ COSTUME BALANCES due Nov.1<sup>st</sup>**

- \* There will be a 10% discount provided to families with multiple children.
- \* **Monthly fees** are charged on a 10.5-month season based on total hours per week.
- \* Tuition paid in full receive a 10% discount.
- \* **Withdrawal policy:** Student must give a **30-day written notice** and tuition and fees will not be refunded.
- \* Tuition and fees are not prorated for missed class or refunded, make-up classes are available.

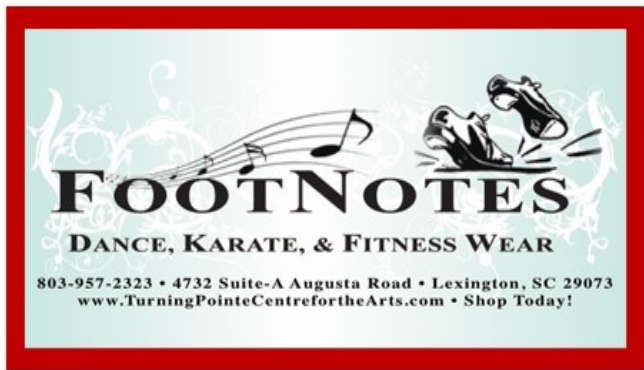
* Monthly Tuition *				<b>Unlimited classes \$370</b>	
1 hour.....	\$65	5.5 hours...	\$235	<i>Monthly Unlimited Class Fees</i>	
1.5 hour....	\$80	6 hours.....	\$250	2 <sup>nd</sup> Child \$315.00	
2 hours.....	\$115	6.5 hours...	\$265	<b>Turning Pointe After School Program</b>	
2.5 hours...	\$135	7 hours.....	\$280		
3 hours.....	\$155	7.5 hours...	\$295		
3.5 hours...	\$175	8 hours.....	\$310		
4 hours.....	\$190	8.5 hours...	\$325		
4.5 hours...	\$205	9 hours....	\$340		
5 hours.....	\$220	9.5 hours ...	\$355		



# Turning Pointe Models & Talent Agency

## Manners, Modeling & Etiquette School

Weekly Classes & Private Lessons



## Calendar Dates

**Classes Begin \* Wednesday August 18<sup>th</sup>, 2021**

Closed Labor Day	September 6 <sup>th</sup> , 2021
Thanksgiving	Nov. 24 <sup>th</sup> – 26 <sup>th</sup> , 2021
Winter Break	Dec. 20 <sup>th</sup> , 2021- Jan. 2 <sup>nd</sup> , 2022
Spring Break	April 11 <sup>th</sup> - 15 <sup>th</sup> , 2022
Memorial Day	May 30 <sup>th</sup> , 2022
Spring Concert	TBA

**Last Day of Class June 12<sup>th</sup>, 2022**

# Turning Pointe Theatre & Karate World Team

**\*\*\*Contact the office for September 11<sup>th</sup> auditions/tryouts \*\*\***

(Non-profit 501(c)(3) Professional Christian Performing Arts Company and Karate World Competition Team)

**Dancers ~ Singers ~ Actors ~ Musical Theatre ~ Karate**

*Practices are the 2<sup>nd</sup> Saturday of each month, times TBA*

TPT Professional 16yrs+, Apprentice ages 13-15yrs, Youth 8-12yrs, Kid's 3-7yrs

Audition Fee: \$15.00 Yearly Company Fees: 1-student \$350 / 2-students \$550 or 10 Monthly payments: \$35 / \$55

**Contract Agreement** is from Sept. 2021 – June 2022 plus required **Summer Camps**

**TPT Company / "Musical Show" / Karate World Team**

4732 Augusta Road, Suite-A Lexington, SC 29073 ~ 803-957-2323 www.TurningPointeCentreForTheArts.com